

Rios Manamo, Pedernales and Angosto

Orinoco Delta

Waypoints

Entering River (crossing delta)

1st point	10° 07' .281 W	62° 08' .578 W
2nd	10° 05' .171 W	62° 08' .977 W
3rd	10° 03' .856 W	62° 09' .364 W
4th	10° 01' .677 W	62° 11' .505 W
5th	10° 00' .344 W	62° 13' .154 W

NOTE: Red & green buoys are not channel markers - They Mark a Shoal

Orinoco Delta Lodge: 09° 22' .748 W
62° 22' .666 W

NOTE: APPROX. from chart plotter

There were 2 "shoals" to watch out for:

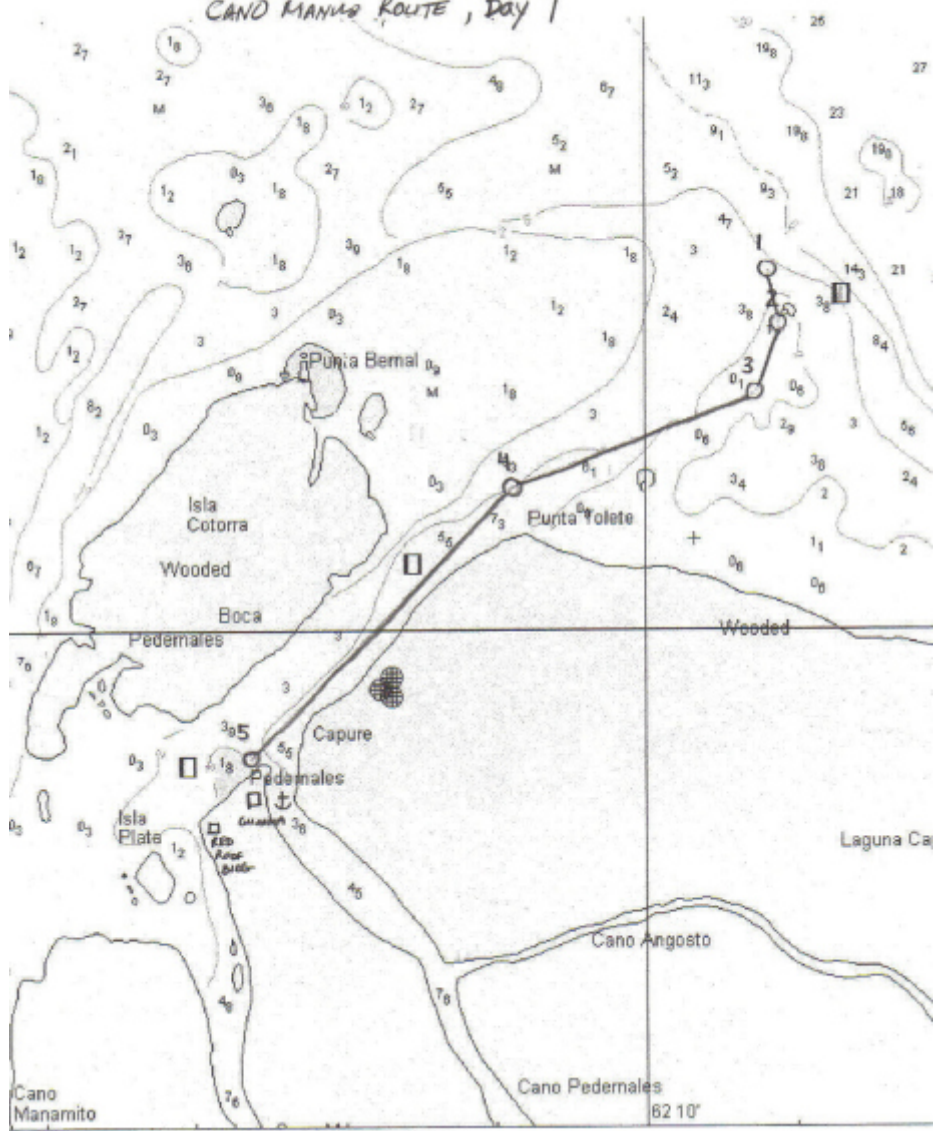
- 1) in front of Pedernales
- 2) at turn to river that the lodge is on

You should do a "courtesy check-in" with la Guardia Nacional at Pedernales

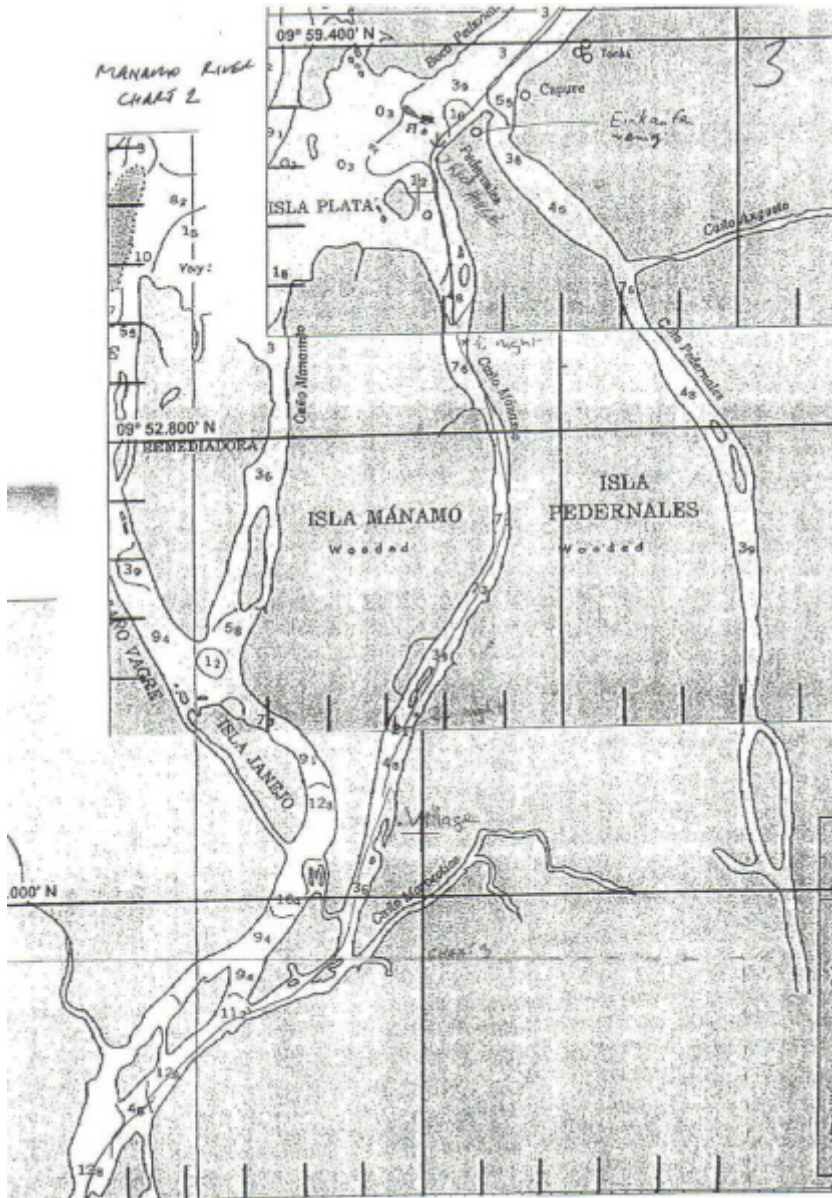
Internet: orinocodelta.com
Orinoco Delta lodge

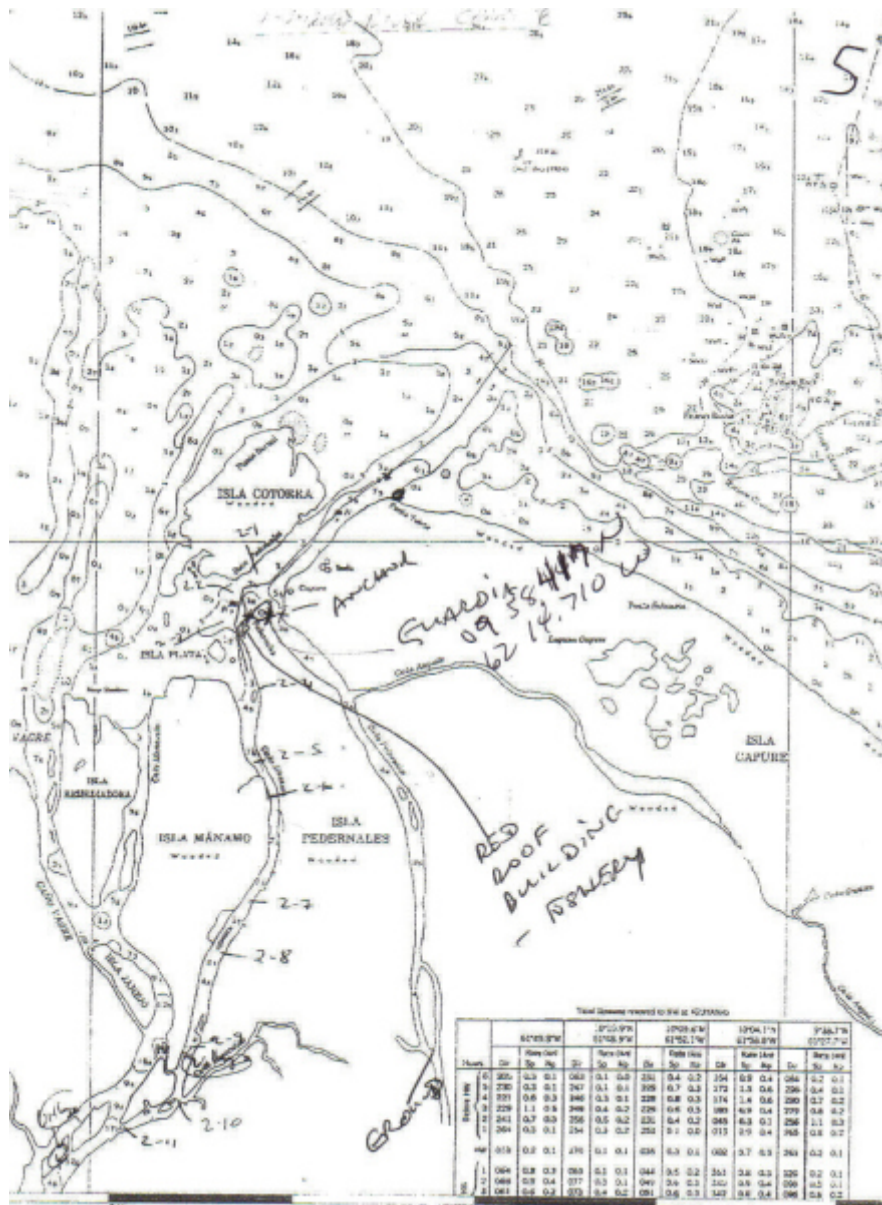
Waypoints across the delta

CANO MANAMITO ROUTE, Day 1



MANAMO RIVER
CHART 2





Total amount received to 31st of 1970

Year	1970-71		1971-72		1972-73		1973-74		1974-75		1975-76		
	Sp	Dr	Sp	Dr	Sp	Dr	Sp	Dr	Sp	Dr	Sp	Dr	
1970	200	0.3	0.1	0.0	0.1	0.0	0.1	0.2	0.4	0.3	0.4	0.4	0.2
1971	230	0.3	0.1	0.0	0.1	0.0	0.1	0.2	0.7	0.3	0.7	1.3	0.6
1972	311	0.6	0.3	0.0	0.3	0.1	0.2	0.8	0.3	1.4	1.4	2.0	1.2
1973	229	1.1	0.8	0.0	0.2	0.2	0.2	0.8	0.3	0.9	0.9	1.4	0.7
1974	261	0.7	0.3	0.0	0.5	0.2	0.2	0.4	0.2	0.6	0.3	0.3	0.3
1975	269	0.3	0.1	0.0	0.3	0.2	0.2	0.1	0.2	0.1	0.4	0.5	0.2
1976	313	0.2	0.1	0.0	0.1	0.1	0.3	0.3	0.1	0.0	0.7	0.3	0.1
1977	0.0	0.3	0.3	0.0	0.1	0.1	0.4	0.5	0.2	0.1	0.8	0.3	0.1
1978	0.0	0.3	0.4	0.7	0.2	0.1	0.9	0.6	0.3	0.2	0.8	0.4	0.1
1979	0.0	0.4	0.2	0.7	0.4	0.2	0.1	0.6	0.3	0.2	0.6	0.4	0.2

7

