

Kampong Tengah

Kampong Ulu

Pak Nam

Bang Non

Kawthoung

Khao Niwet

Ranong

Bang Rin

At Ranong we cleared customs out of Thailand and loaded all our gear into a longtail boat to be taken to our boat anchored off Kawthoung in Myanmar – the other side of the estuary







Depth	Soundings
10	10
11	11
12	12
13	13
14	14
15	15
16	16
17	17
18	18
19	19
20	20
21	21
22	22
23	23
24	24
25	25
26	26
27	27
28	28
29	29
30	30
31	31
32	32
33	33
34	34
35	35
36	36
37	37
38	38
39	39
40	40
41	41
42	42
43	43
44	44
45	45
46	46
47	47
48	48
49	49
50	50
51	51
52	52
53	53
54	54
55	55
56	56
57	57
58	58
59	59
60	60
61	61
62	62
63	63
64	64
65	65
66	66
67	67
68	68
69	69
70	70
71	71
72	72
73	73
74	74
75	75
76	76
77	77
78	78
79	79
80	80
81	81
82	82
83	83
84	84
85	85
86	86
87	87
88	88
89	89
90	90
91	91
92	92
93	93
94	94
95	95
96	96
97	97
98	98
99	99
100	100

11/15/2014 11:33:06 am



End

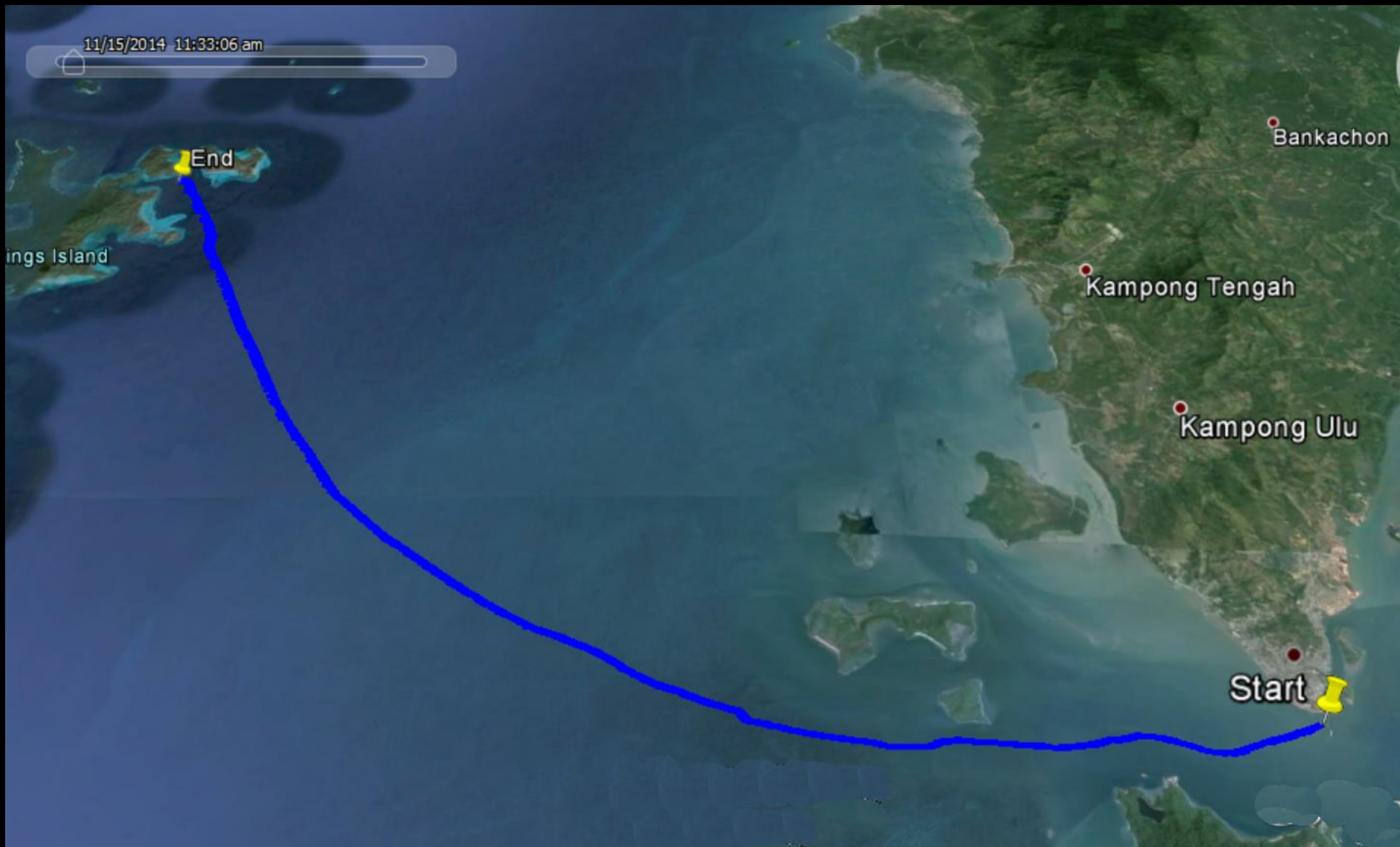
ings Island

Bankachon

Kampong Tengah

Kampong Ulu

Start



This is one of a vast fleet of fishing boats that stay out all night catching squid and prawns for the local, domestic market.

The booms are fitted with very bright lights that attract their prey. At night you can see loads of them spread across the horizon – many of them a very bright green loom when the boats are over the horizon

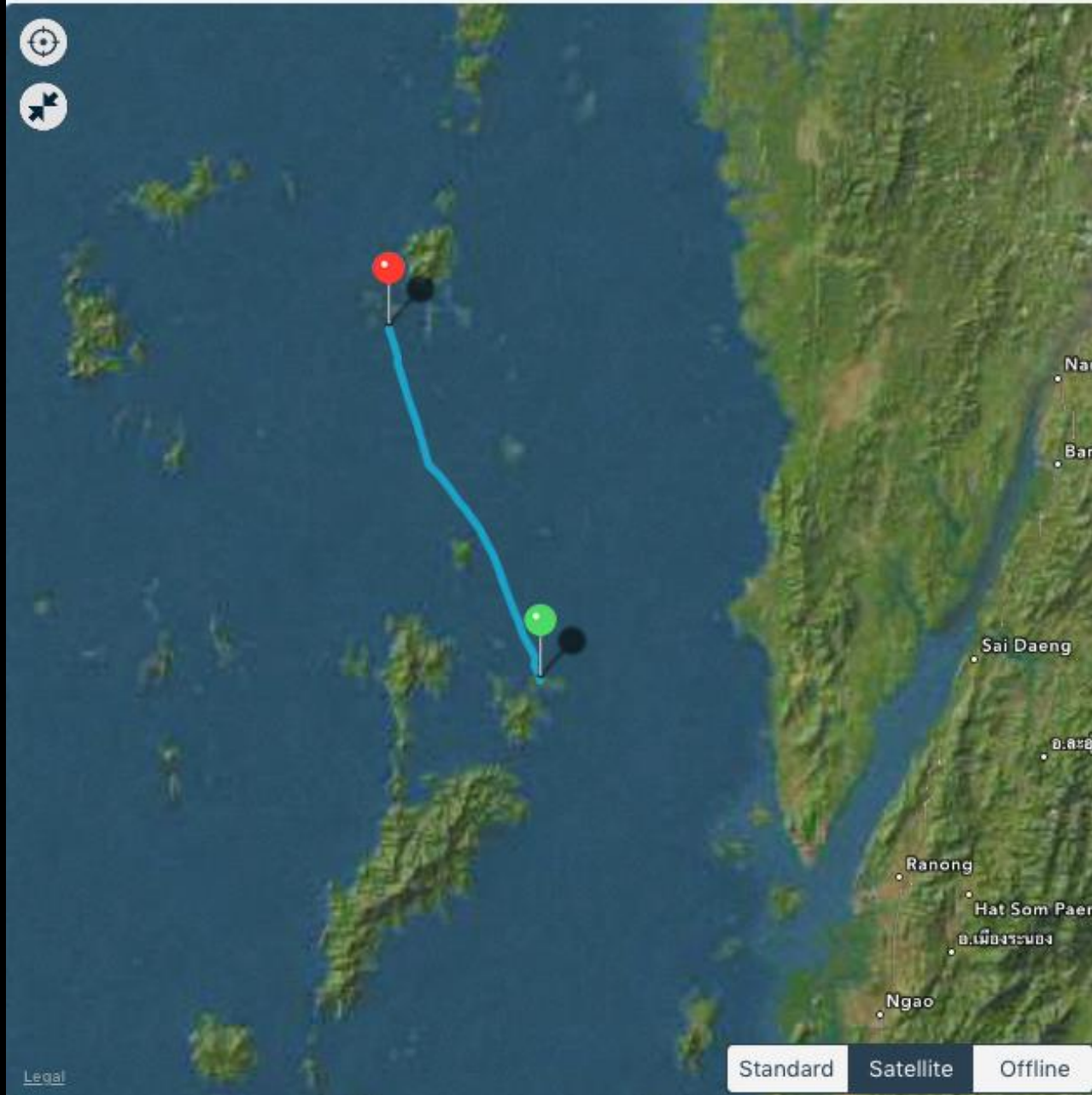


One of the boats that support the fishing fleet. The stuff on top of the bridge roof includes ice, water, fuel, food, etc – in fact everything they might need.



Barwell Island to 115

Sun 31 Jan 2016 1:34am 3h58m 20.43nmi




The next morning, Sunday 31 January, we headed north to anchor off a small unnamed island for lunch and a swim, before moving across to 115 (Frost Island) for the night

Approaching the Sunday lunchtime anchorage. Startlingly white beaches were everywhere



After lunch and a swim, we moved across to Island 115 (Frost Island) to join the rest of the fleet



Sunday overnight anchorage

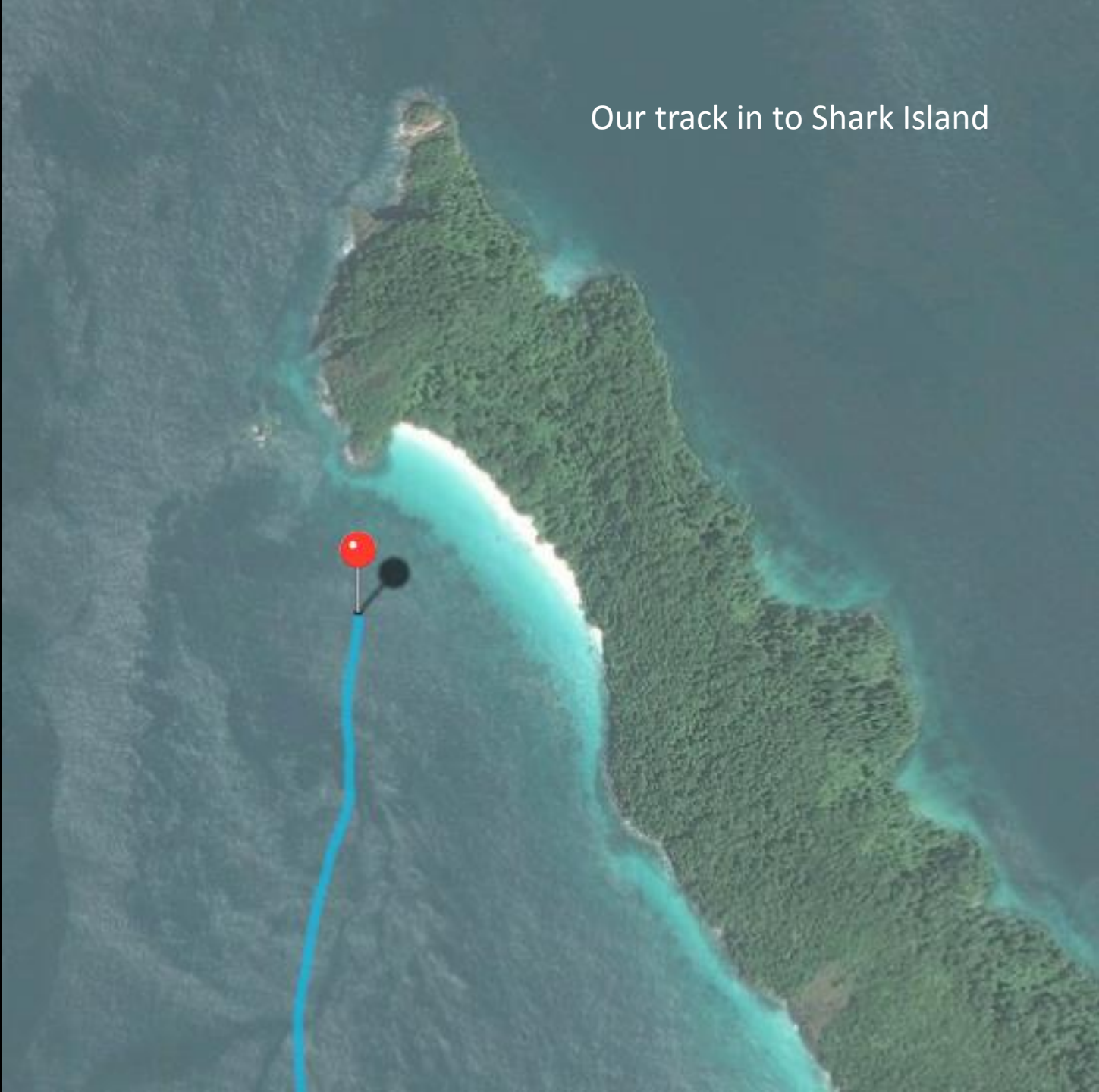
The image shows an aerial view of three islands in a row. The top-left island is the largest and has a blue circle with an arrow pointing to it from the 'Sunday overnight anchorage' label. The middle-right island is also large and has a blue circle with an arrow pointing to it from the 'Sunday lunchtime anchorage' label. The bottom island is smaller and more elongated. The water around the islands is a clear turquoise color, indicating a shallow reef flat or lagoon.

Sunday lunchtime anchorage

After a snorkel at Shark Island, off we went again to the southern of the two mangrove-lined rivers on Lampi Island ...




Our track in to Shark Island





Lampi is Myanmar's only maritime national park. It embraces around 20 of the Archipelago's 800 islands. The Park has a wide variety of habitats including evergreen forest, mangroves, beach and dune forests, coral reefs, sea grass beds and a rich biodiversity of over 1,000 species. It is a source of food, water and energy sources for local people. The Moken sea gypsies attribute spiritual and cultural values to Lampi, their 'Mother Island' and the largest island in the park. Lampi was declared a national park in 1996. The main threats to it are illegal logging, hunting, dynamite fishing and over-harvesting of marine resources.

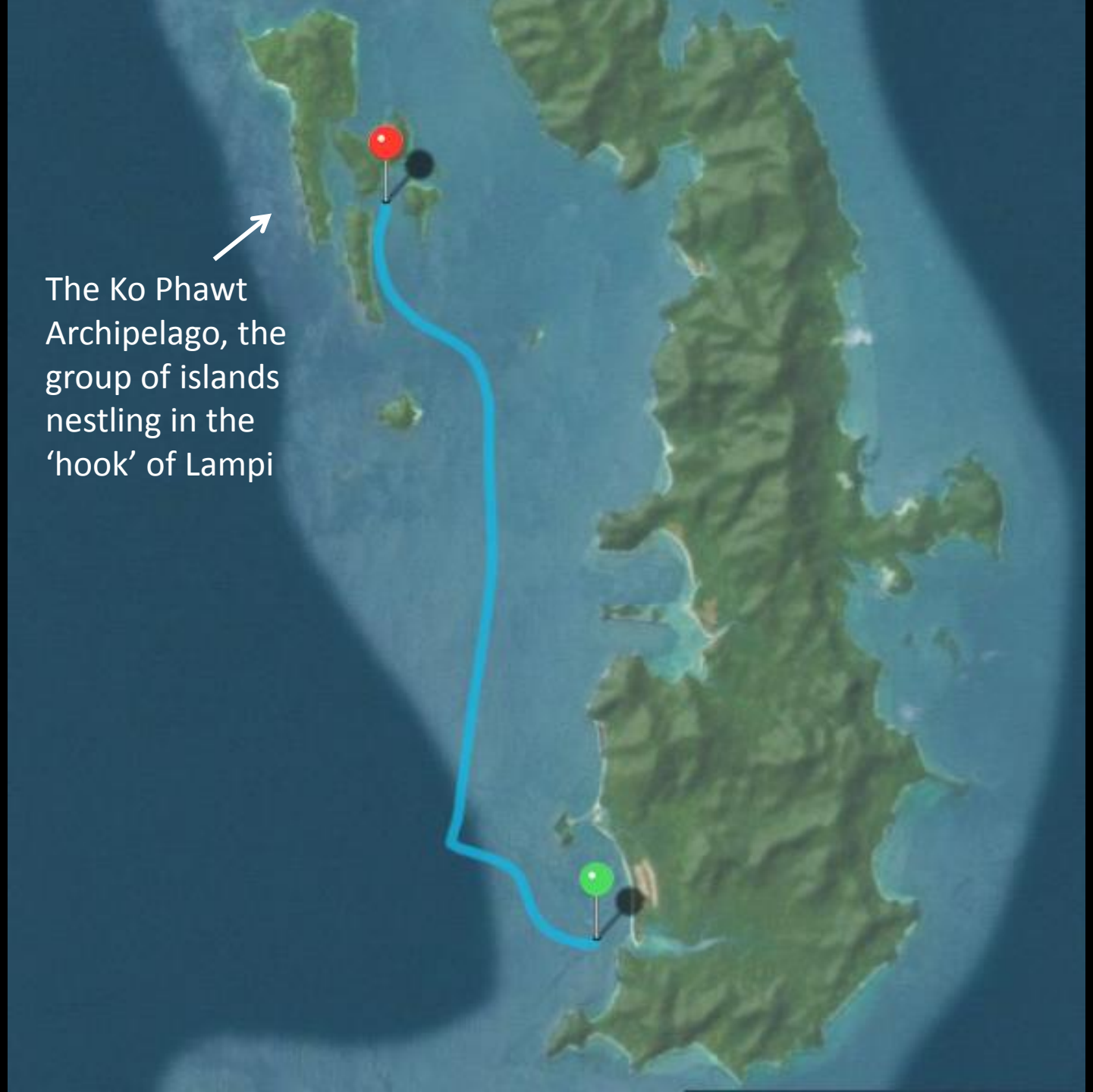
An aerial photograph of a coastal area with a network of waterways. A blue line tracks a path from the left side of the image into a narrow channel. A red pushpin is placed on the blue line, and a black pushpin is placed slightly to its right. The surrounding land is green, and the water is a light blue-green color.

Our track in to the
anchorage off
Mangrove Creek

We got as far
as here



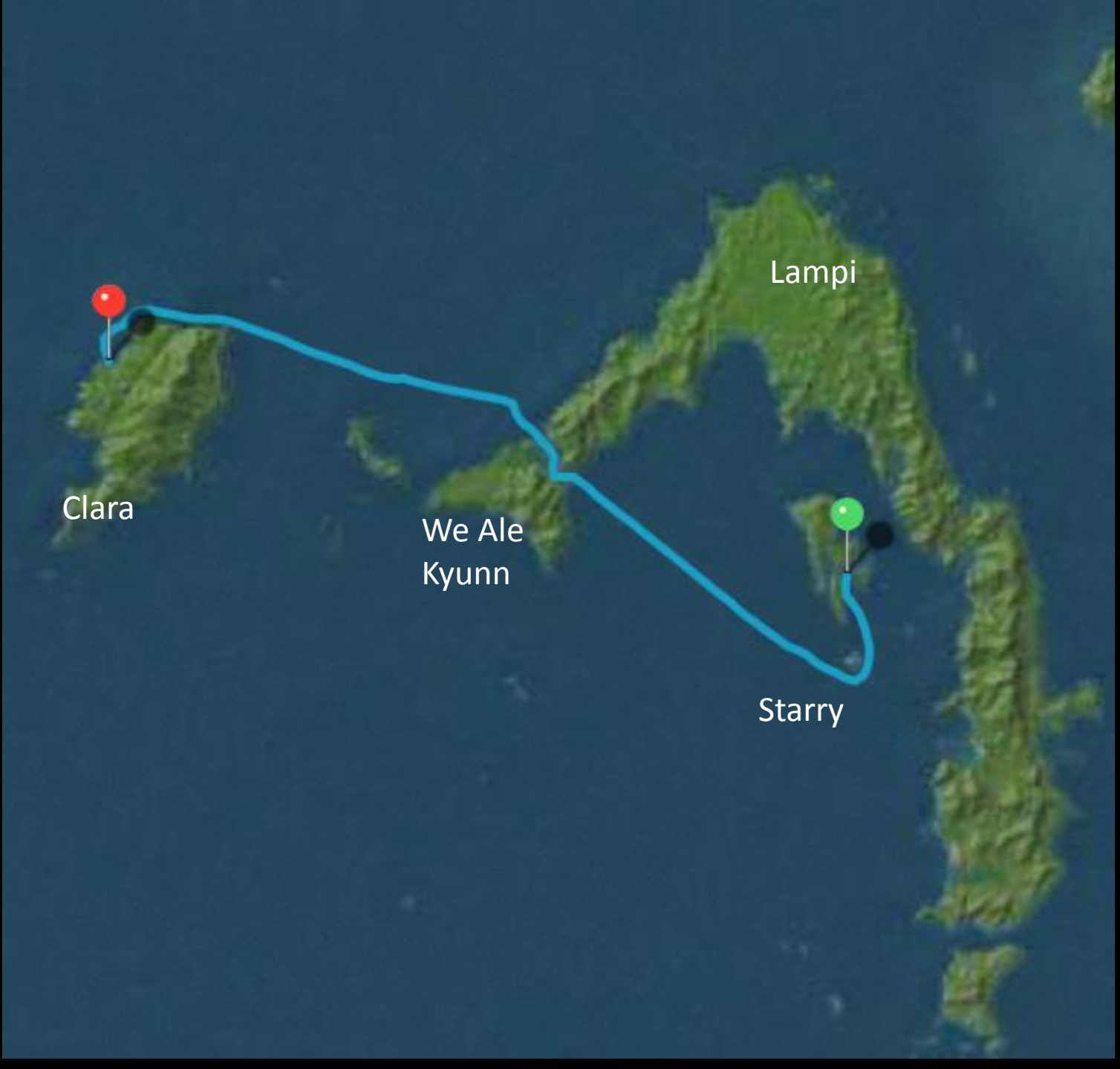
The Ko Phawt Archipelago, the group of islands nestling in the 'hook' of Lampi



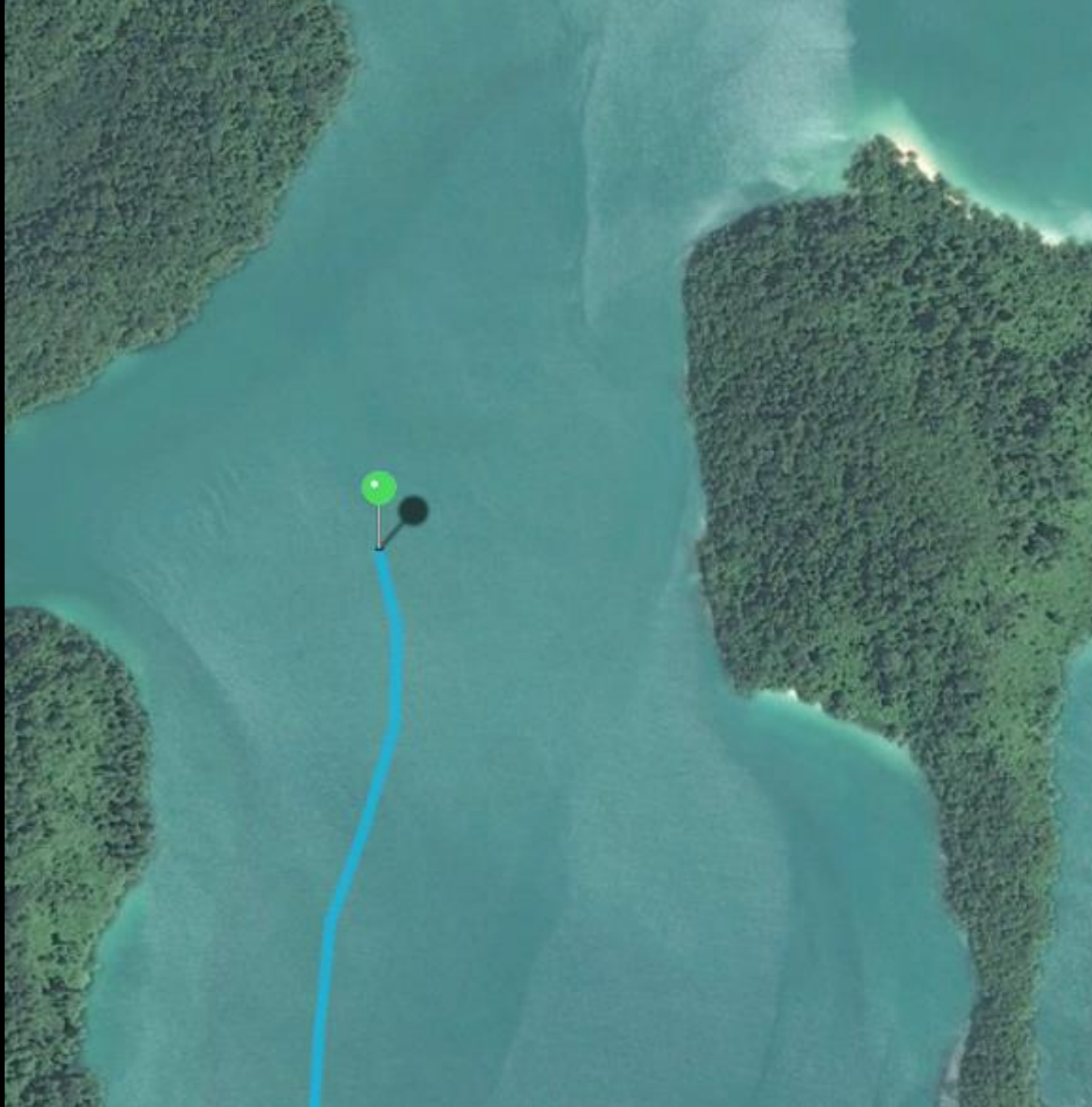


The plan for the day was to sail a little way south to Starry Island, a secluded beach, for a swim.

Then we went through Salet Galet (the channel between Lampi and We Ale Kyunn) before crossing to Clara for the night




We sailed south to
Starry Island...





Starry
Island

An aerial photograph of a tropical island, Tar Yar (Starry Island), which is densely covered in green vegetation. The island has a white sandy beach along its eastern and southern shores. The surrounding ocean is a deep blue with visible whitecaps. A bright blue line traces a path through the water, starting from the bottom right and moving towards the island. A black arrow points from the text 'We anchored here ...' to a specific spot on this blue path, located in the open water to the east of the island's main body.

Tar Yar
(Starry Island)

We anchored here ...



We anchored here ...

The Moken village



... and went ashore on the southern end of the island, from where we walked through the Moken village to the temple, the school, the shop and the boatyard on the north coast

Boatyard

Shop

School

Temple

We landed here



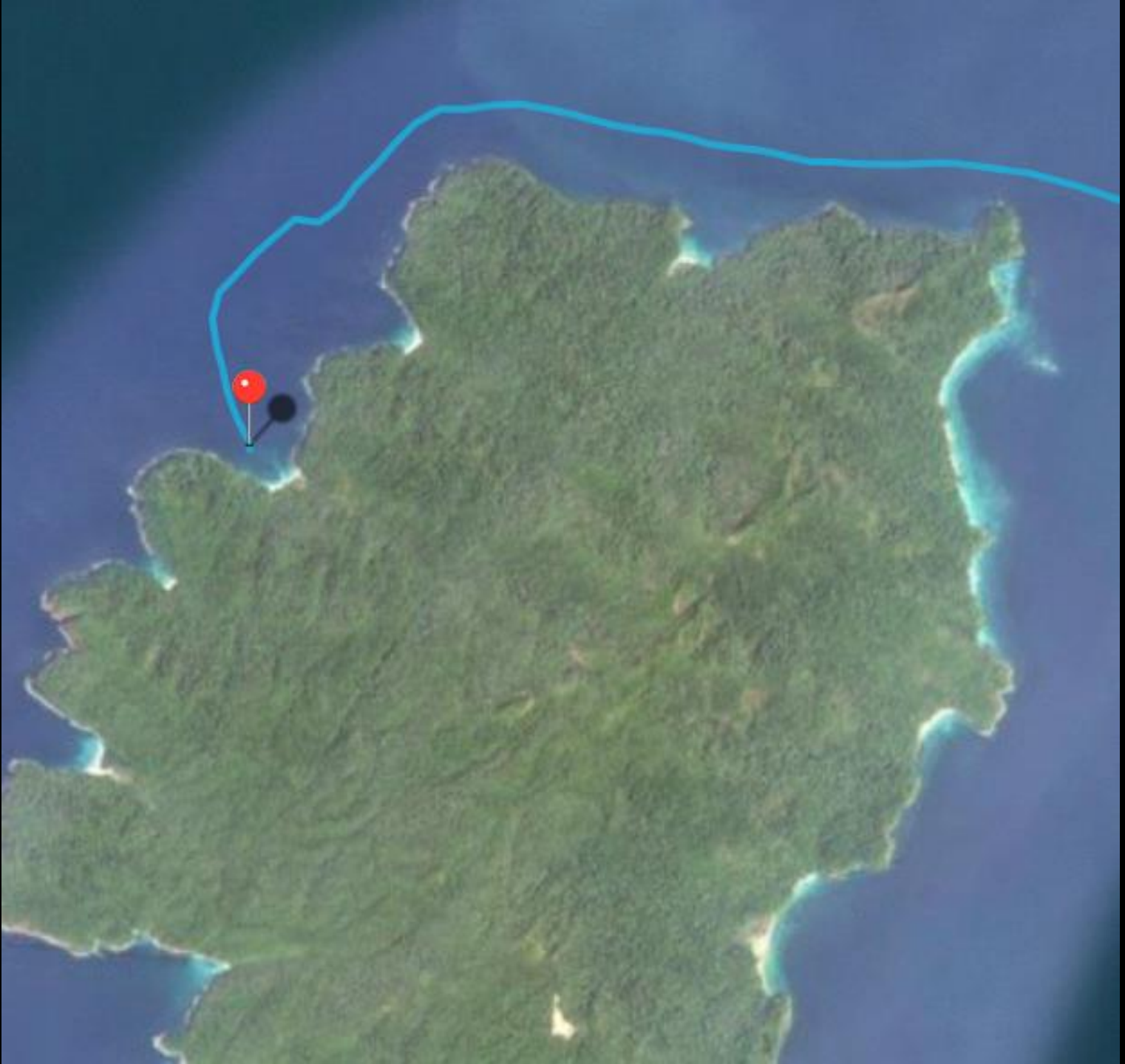








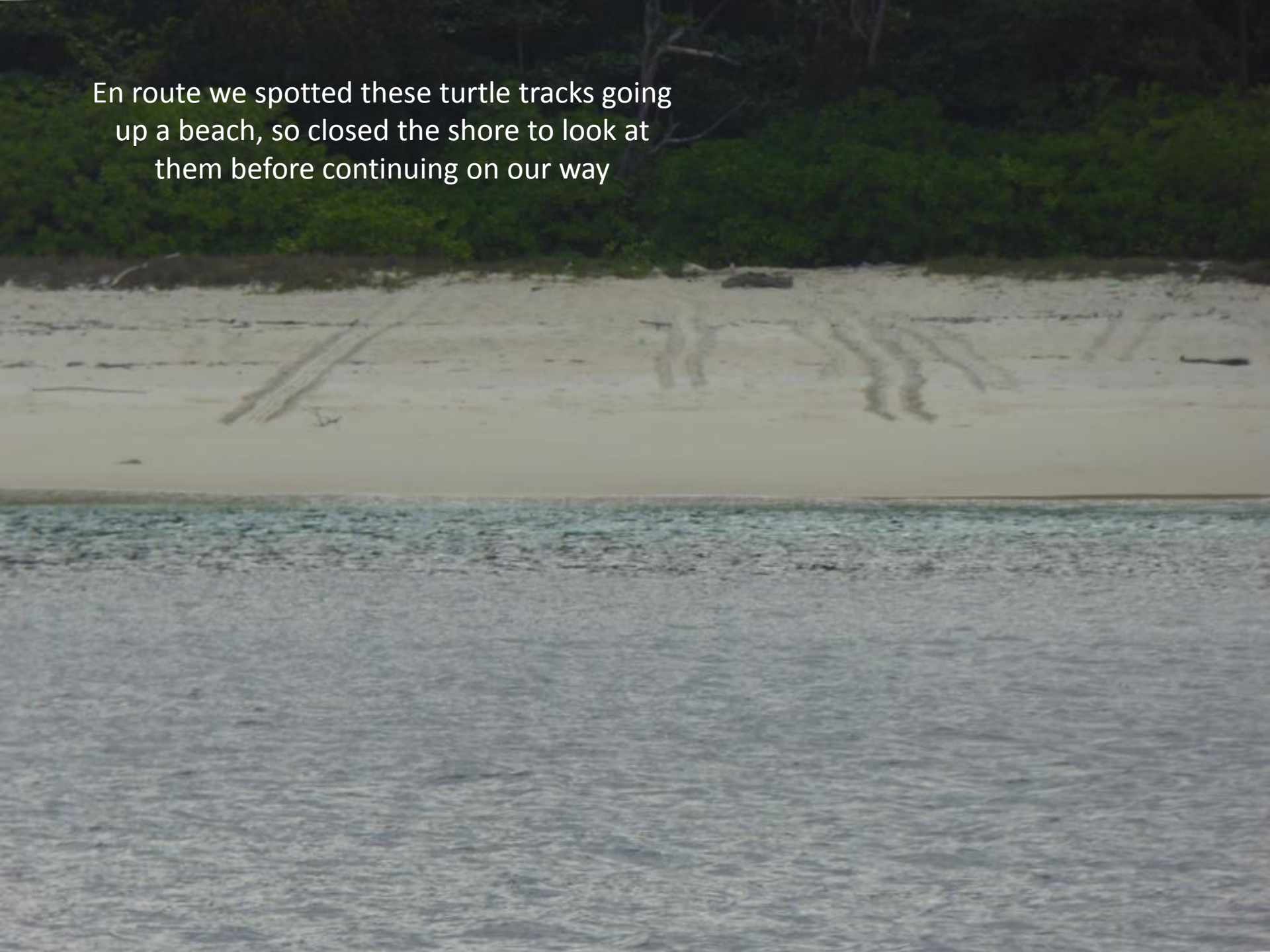
... and off we went to anchor off Clara Island for the night at Waterfall Bay





The river coming down to the sea

En route we spotted these turtle tracks going up a beach, so closed the shore to look at them before continuing on our way





Then we continued on our way,
anchoring here for a swim

Andaman Sea

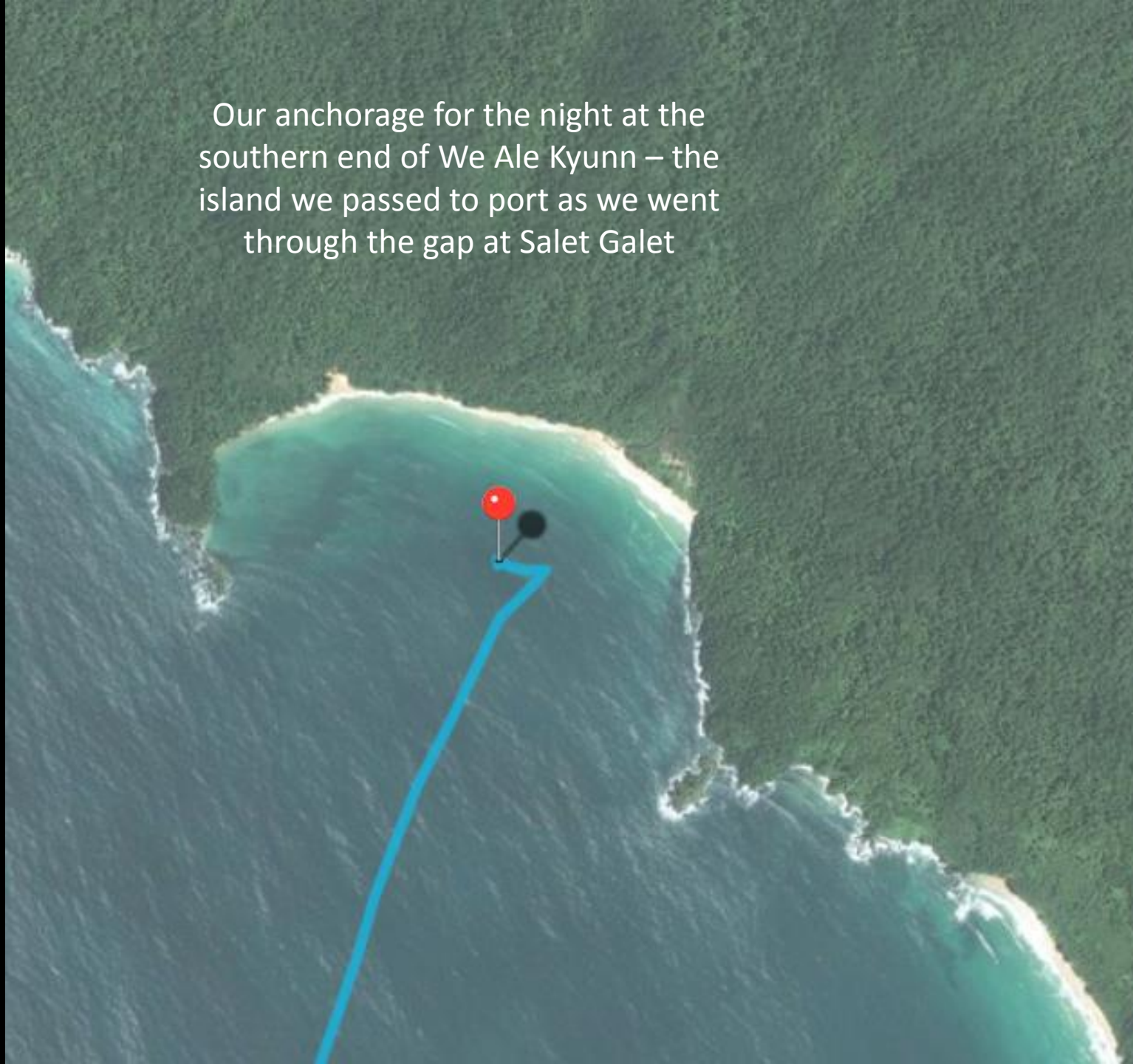


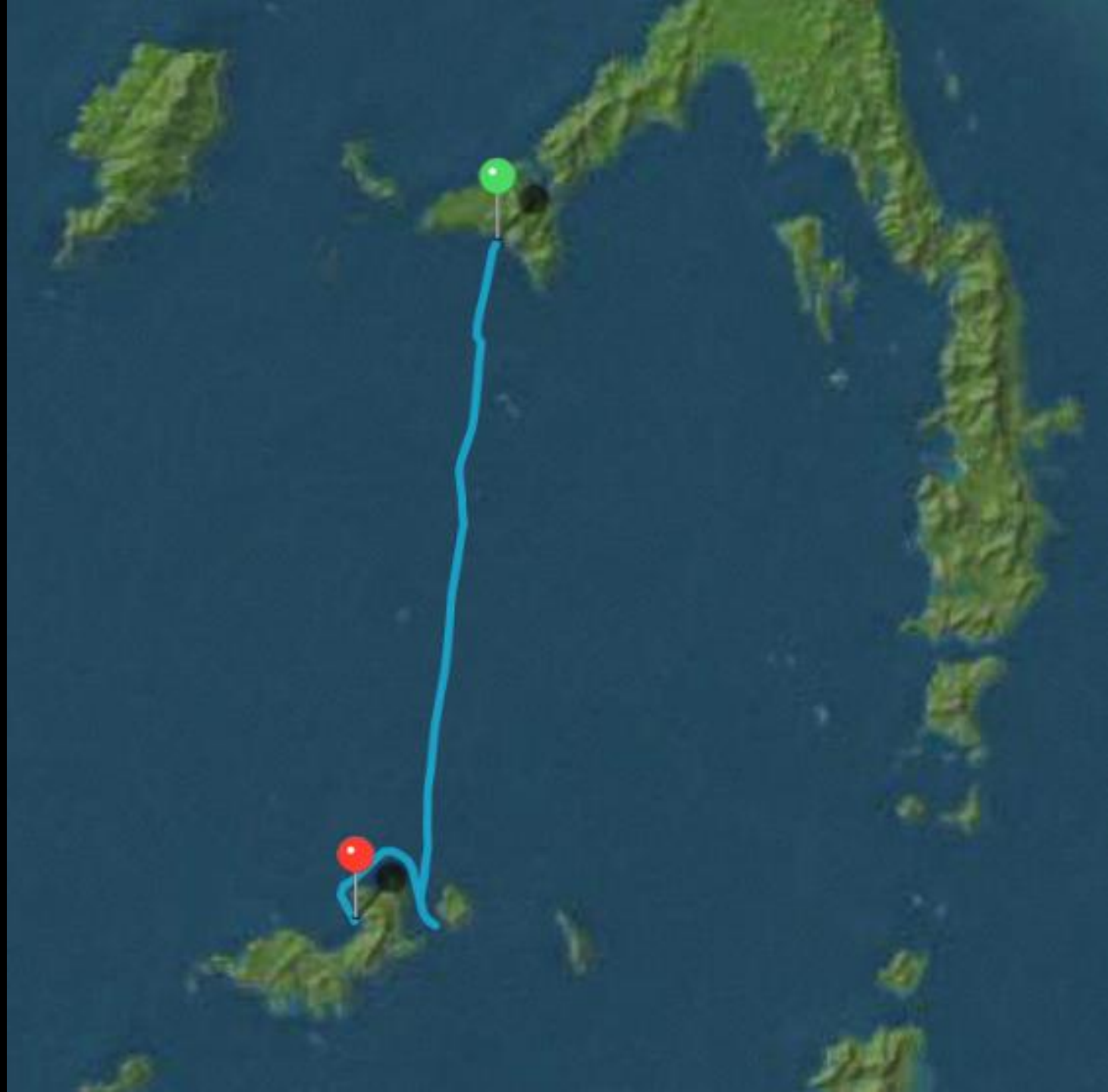


PHUKET - THAILAND
www.sailcataleya.com

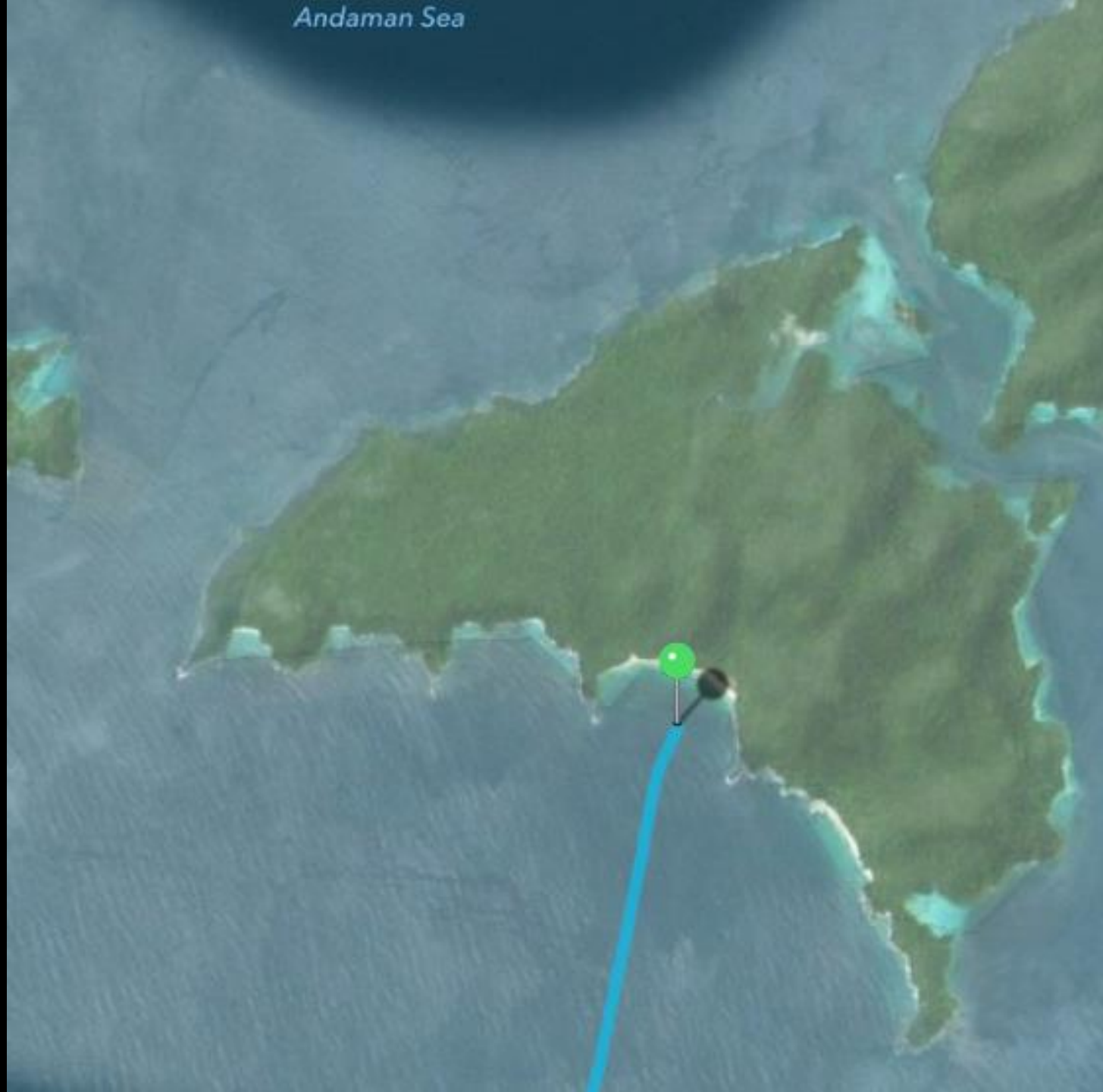


Our anchorage for the night at the southern end of We Ale Kyunn – the island we passed to port as we went through the gap at Salet Galet





Andaman Sea

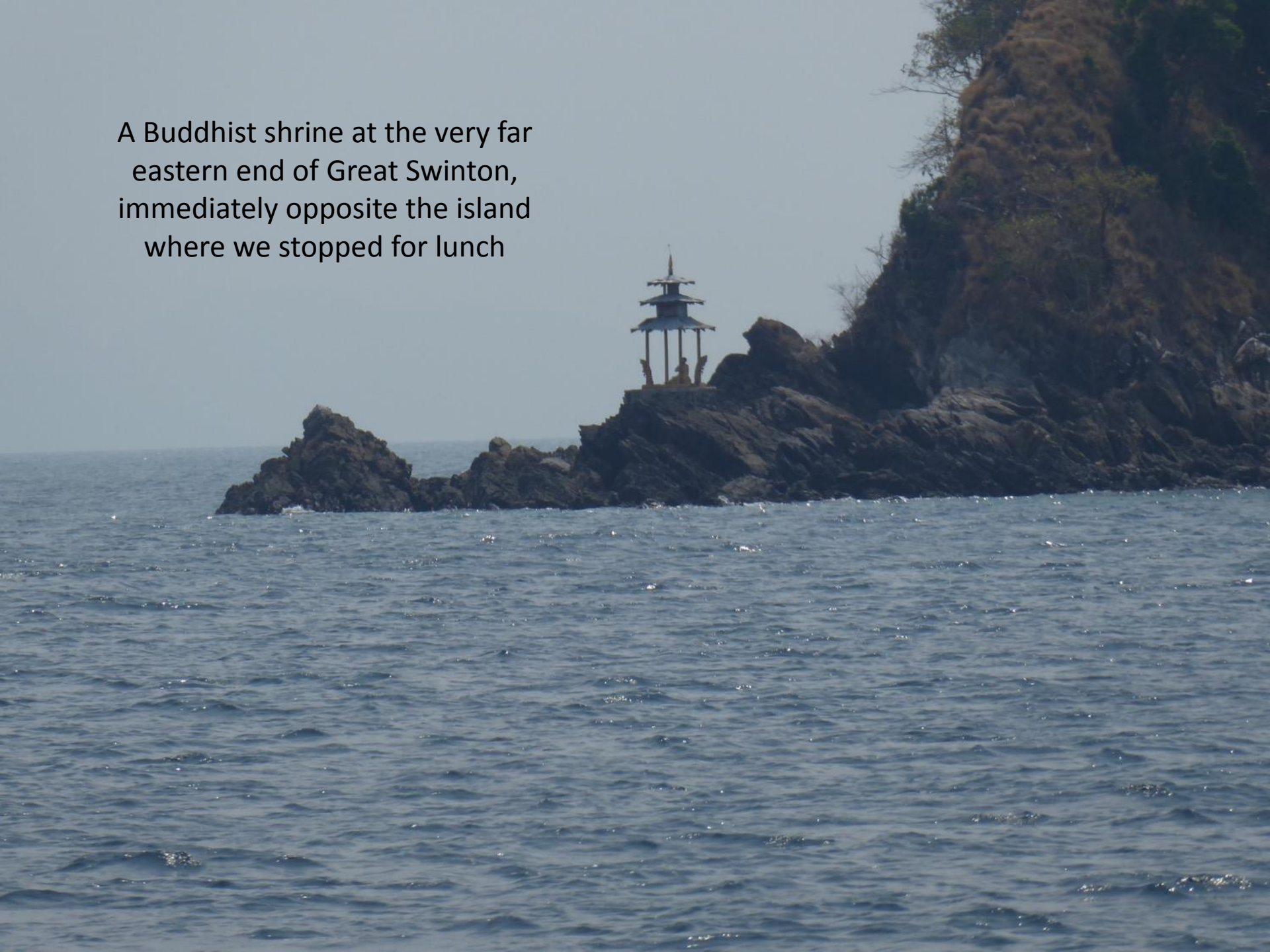


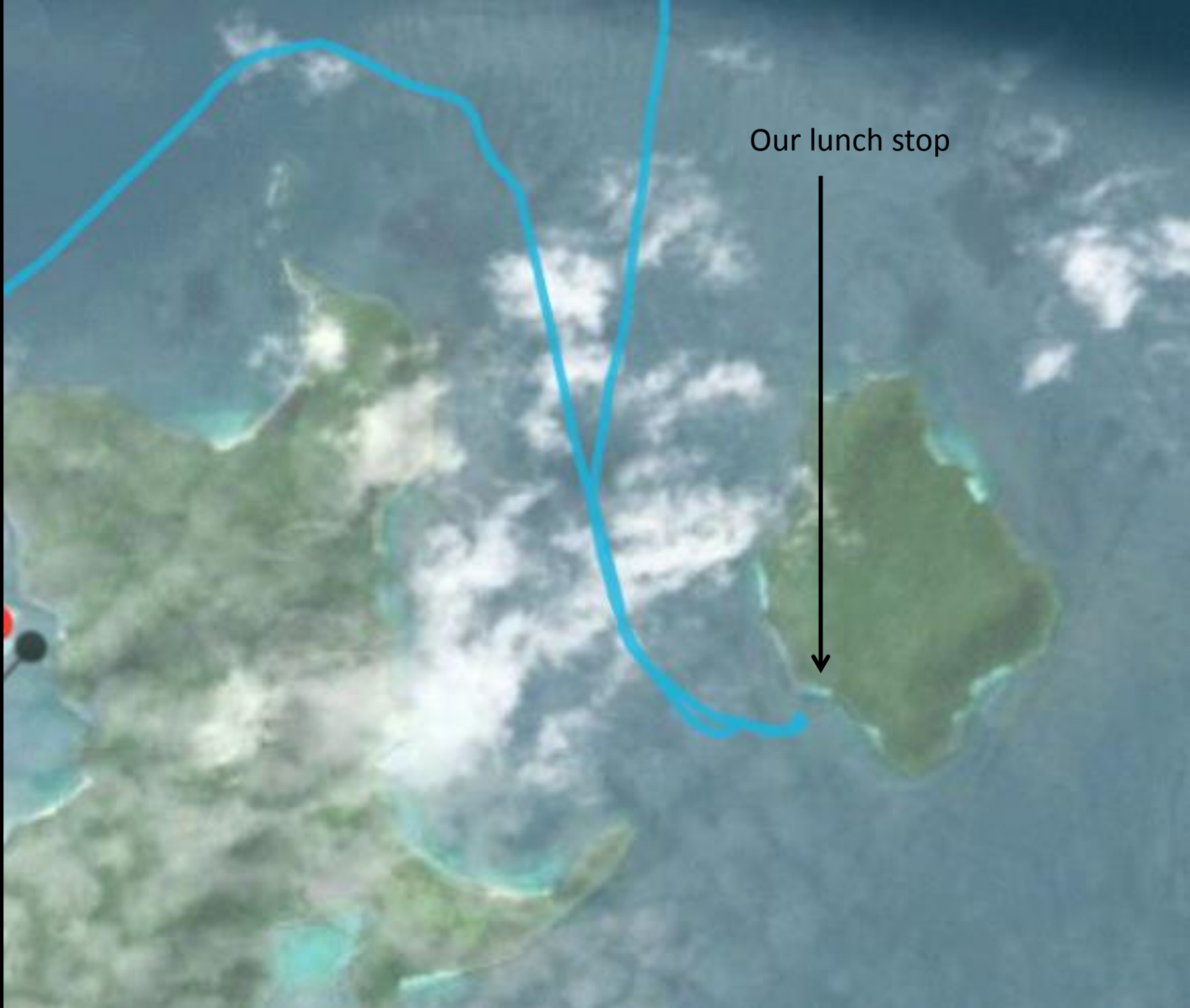


Great Swinton



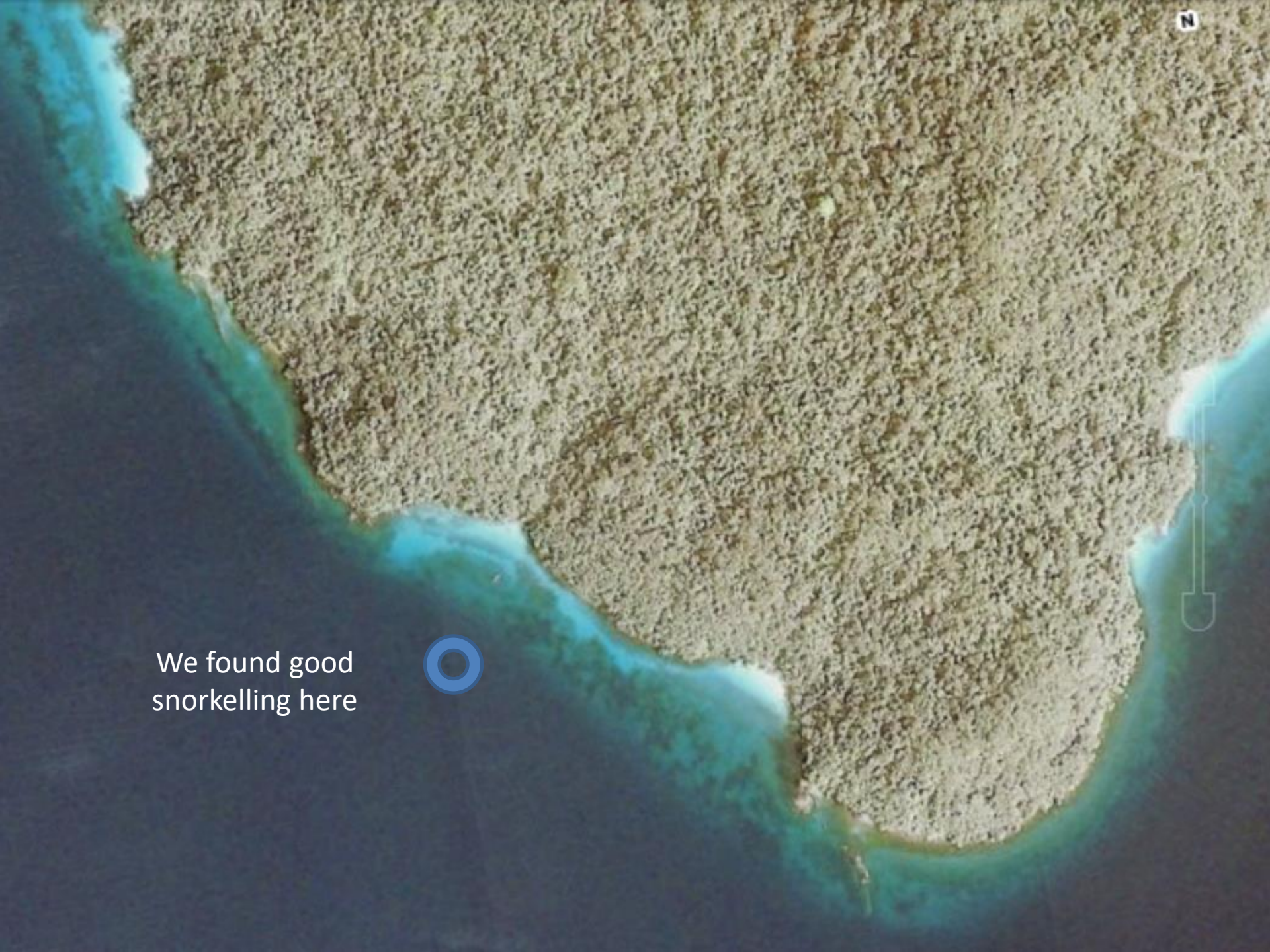
A Buddhist shrine at the very far eastern end of Great Swinton, immediately opposite the island where we stopped for lunch





Our lunch stop





We found good snorkelling here





Our anchorage off Great Swinton. We were quite a way out.





Friday 5 February

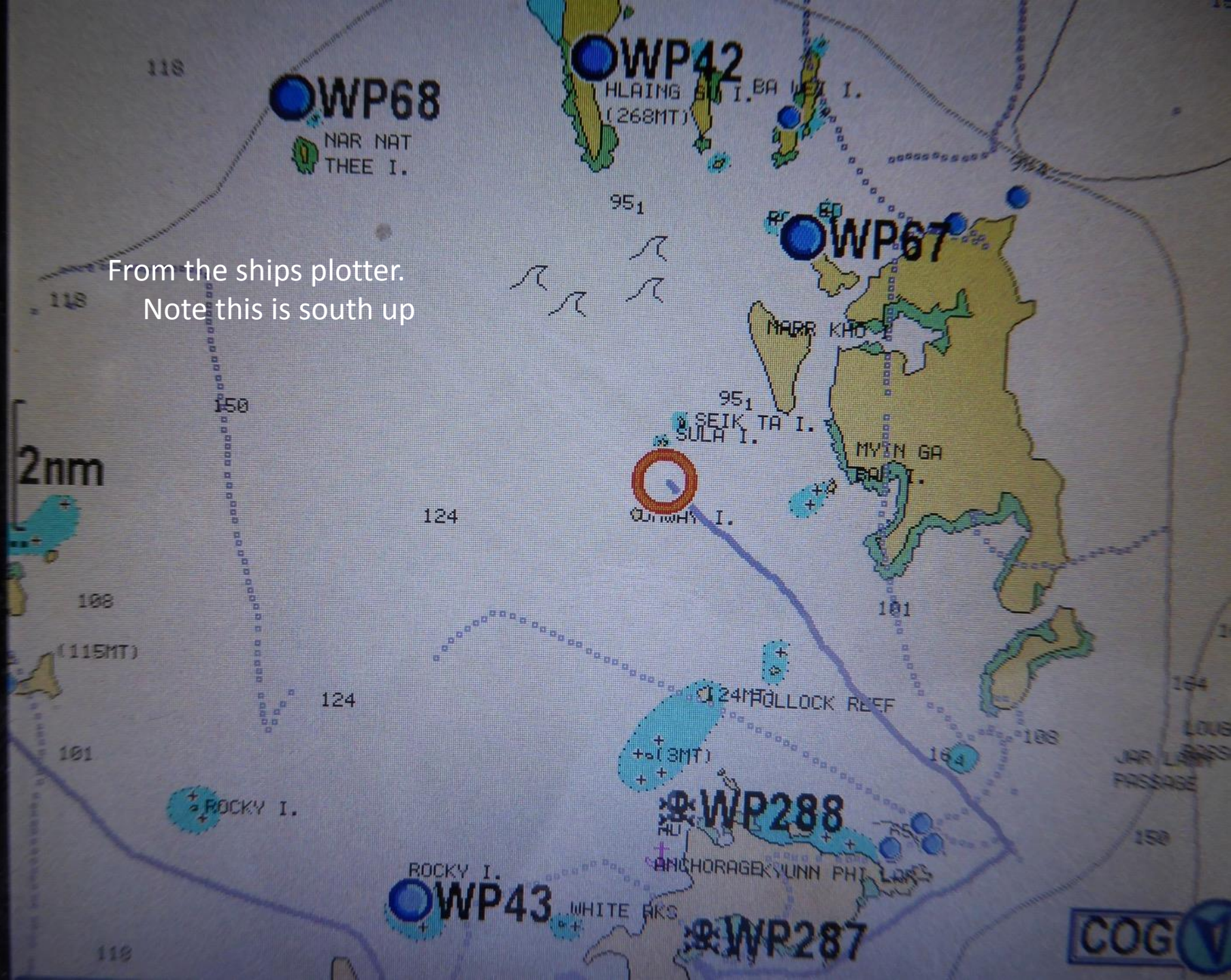
The plan was to sail from Great Swinton to the staggeringly beautiful, and very large inlet at the southern end of Loughborough Island.

However, our skipper, Mato, suggested we go first to a small islet called Ohway Island (or Peacock Island) that isn't shown on many charts, but did feature on his plotter's charts.

Approaching Peacock Island ...



From the ships plotter.
Note this is south up



5nm

OHWAY I.

SULA I.

SEIK TA I.



Loughborough Island

We anchored here ...

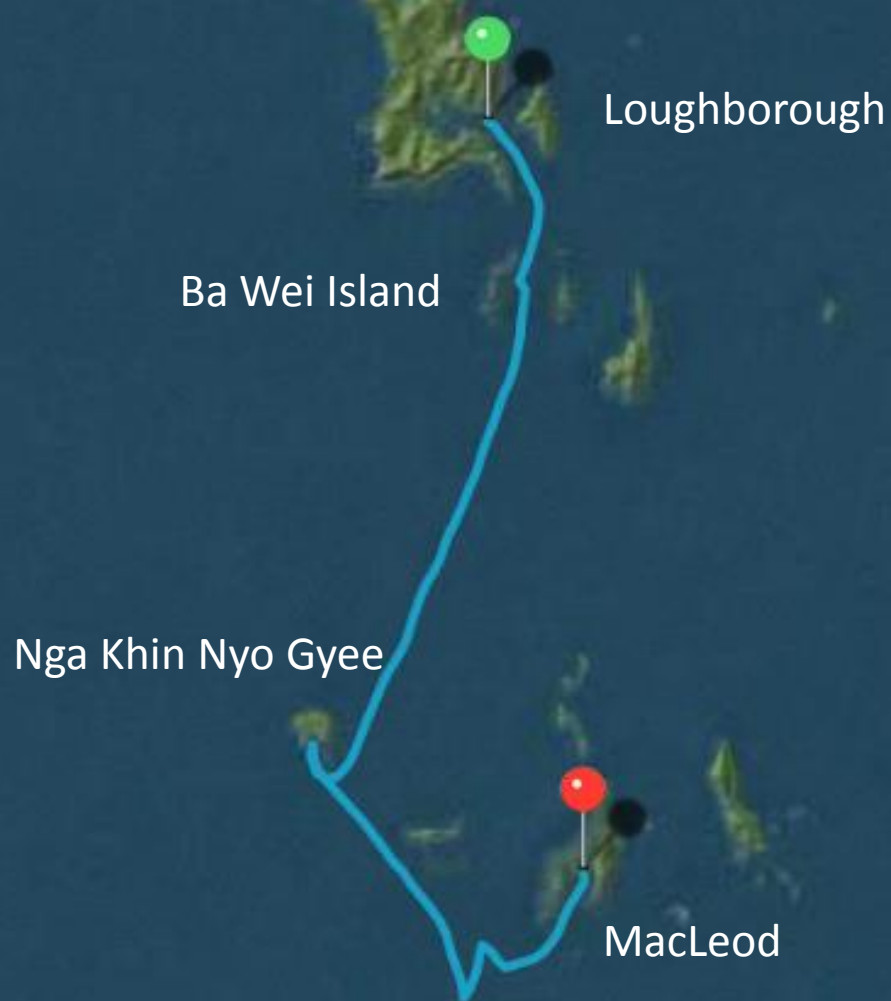


Sunset

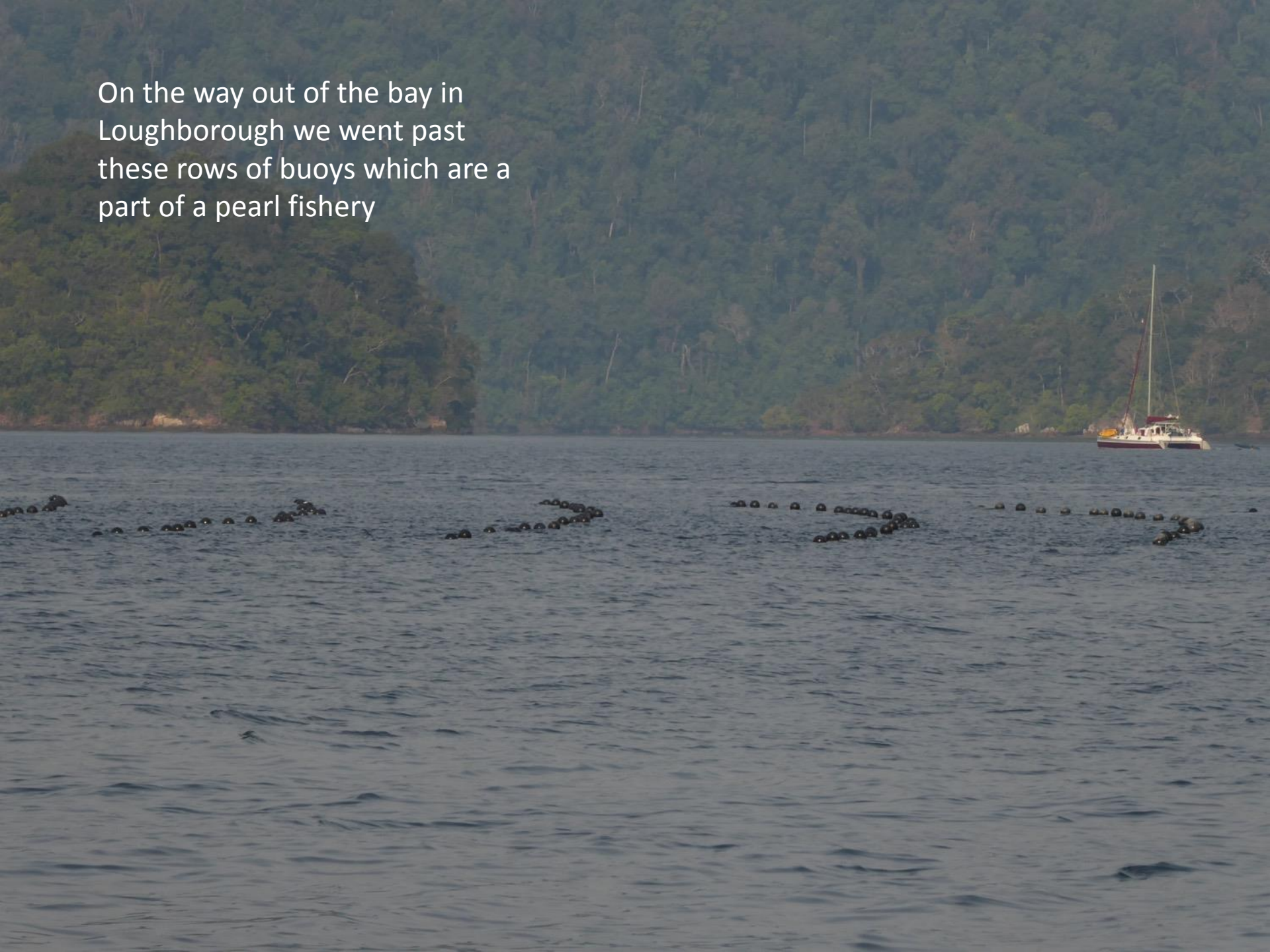


Saturday 6
February

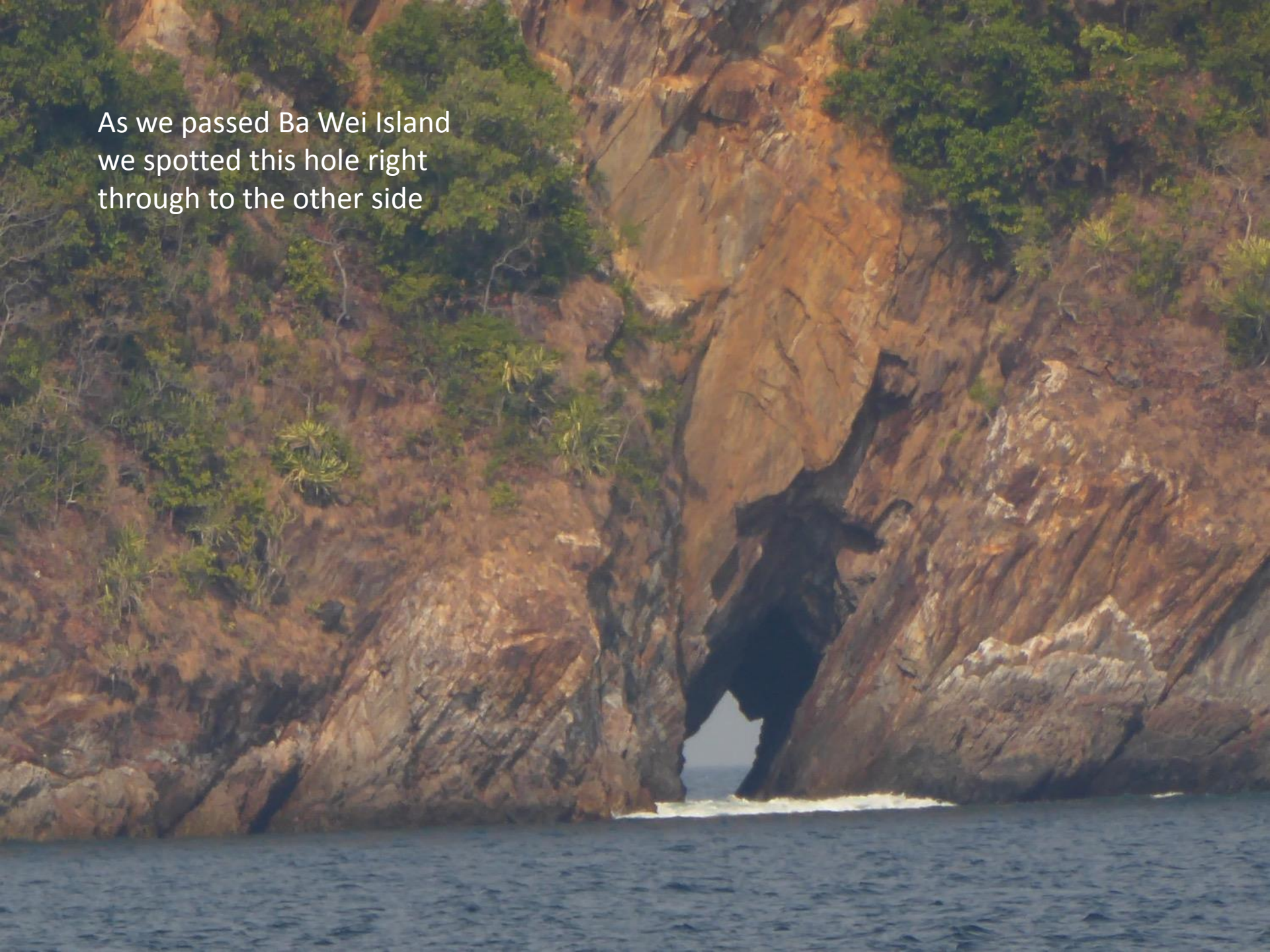
We sailed south
from
Loughborough
Island, heading
for MacLeod
Island with a
lunchtime stop
at Nga Khin Nyo Gye



On the way out of the bay in
Loughborough we went past
these rows of buoys which are a
part of a pearl fishery



As we passed Ba Wei Island
we spotted this hole right
through to the other side



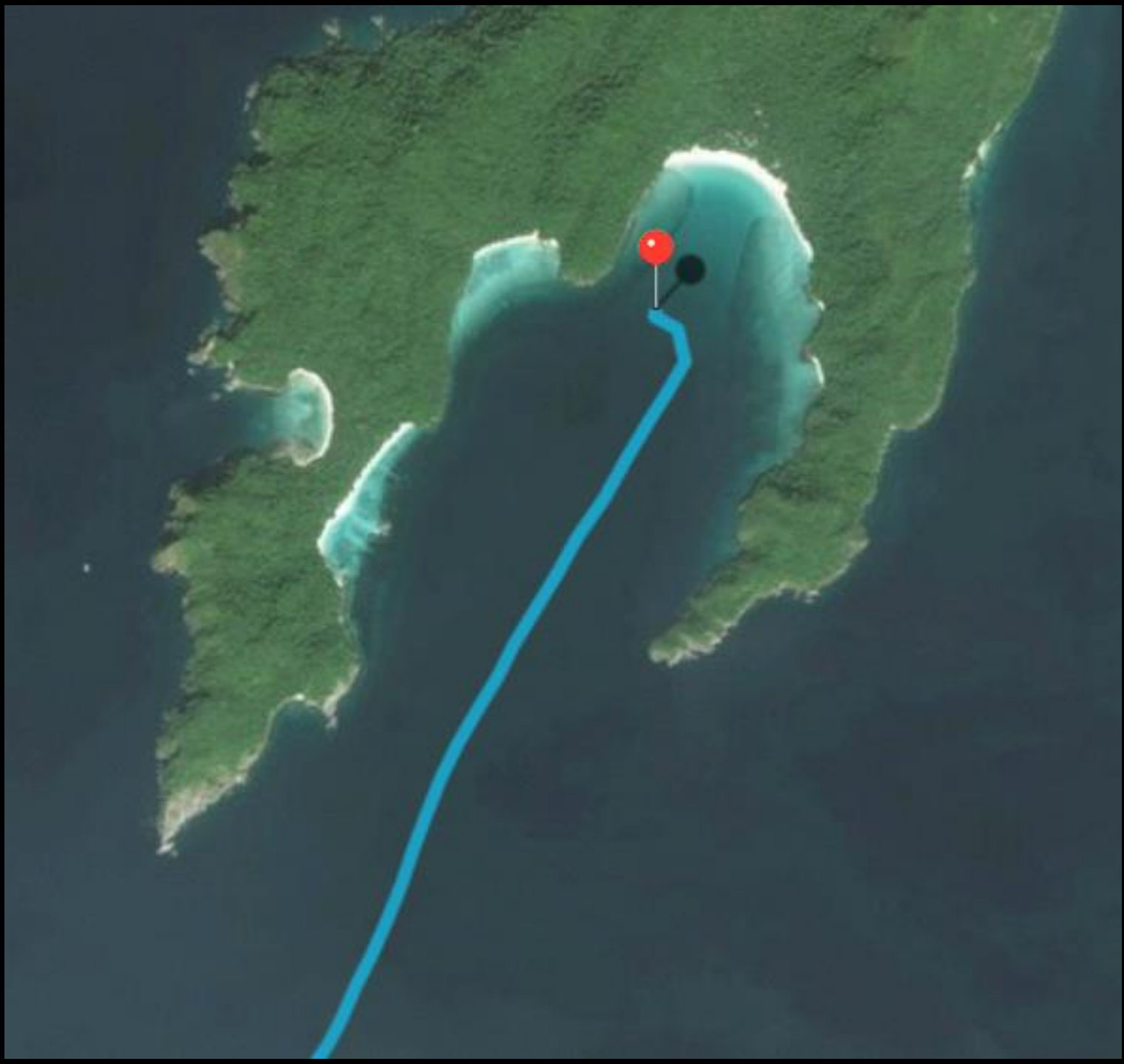
This shows that Ba Wei isn't just a small rock which makes the hole right through all the more remarkable

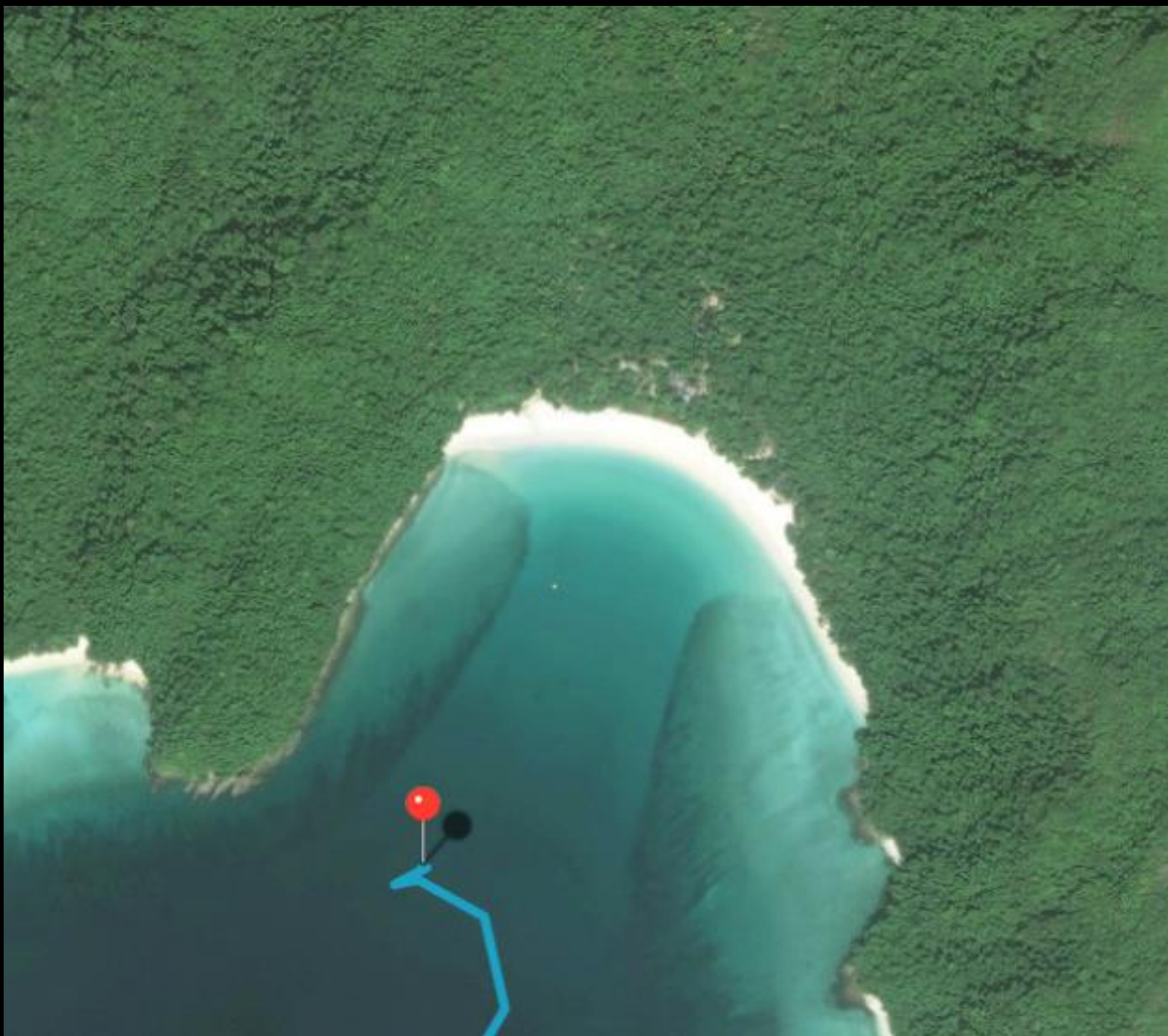


We anchored off Nga Khin Nyo
Gyee for a snorkel over the
excellent coral, followed by lunch

'Gyee' means 'big'.
The smaller
adjacent island has
the same name but
ends with 'Nge',
meaning 'small'









There we found the Mergui Andaman Resort, the only habitat apart from the Moken village that we'd seen in our whole time in the archipelago. We later discovered, that's not surprising as it's the only one.



In 27 knots of wind we sailed
past this rock just to the
south of MacLeod Island



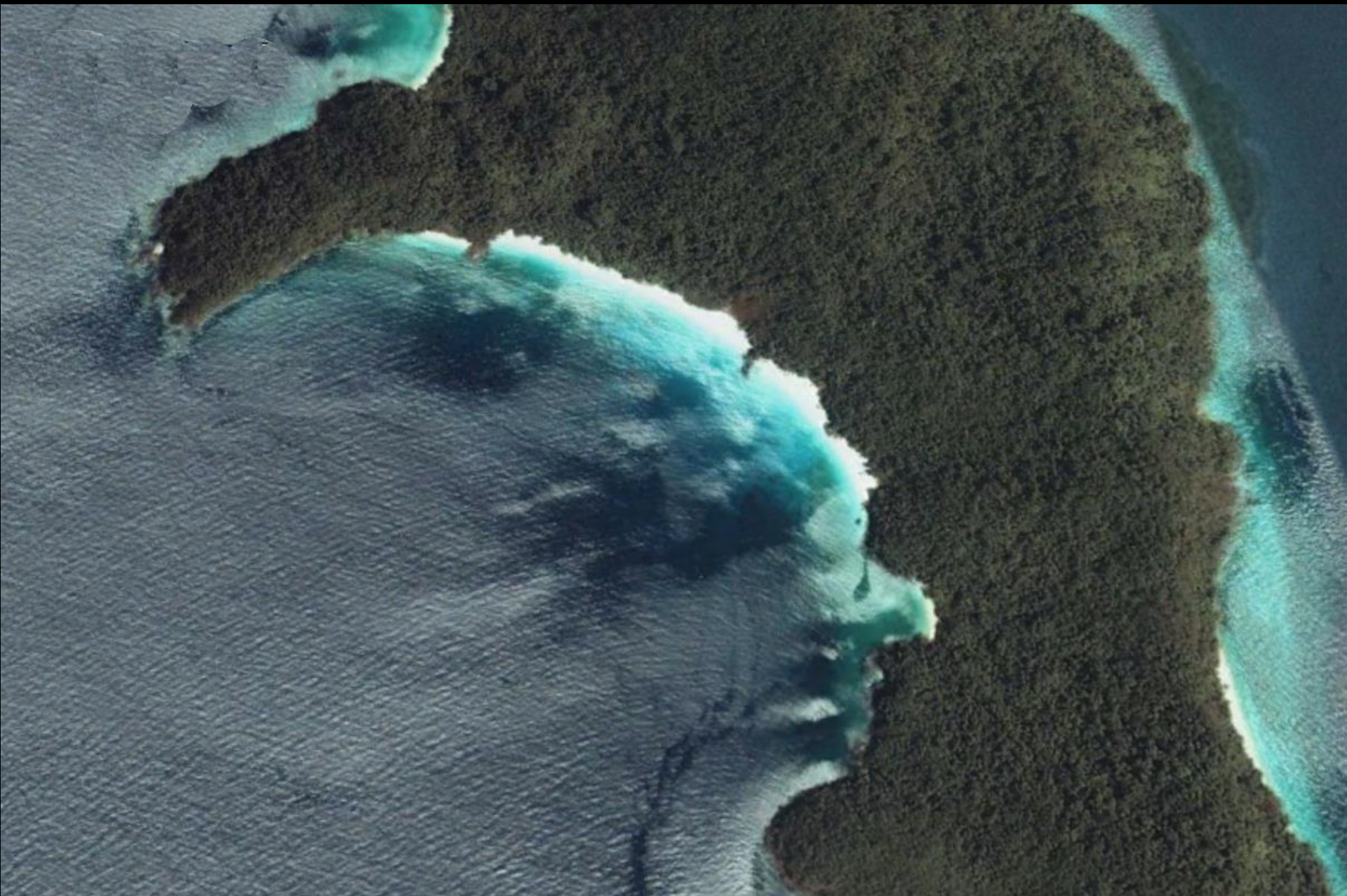
Our intended anchorage,
South Bay, St Matthew's
Island was untenable due to a
strong wind causing kabatic
squalls.



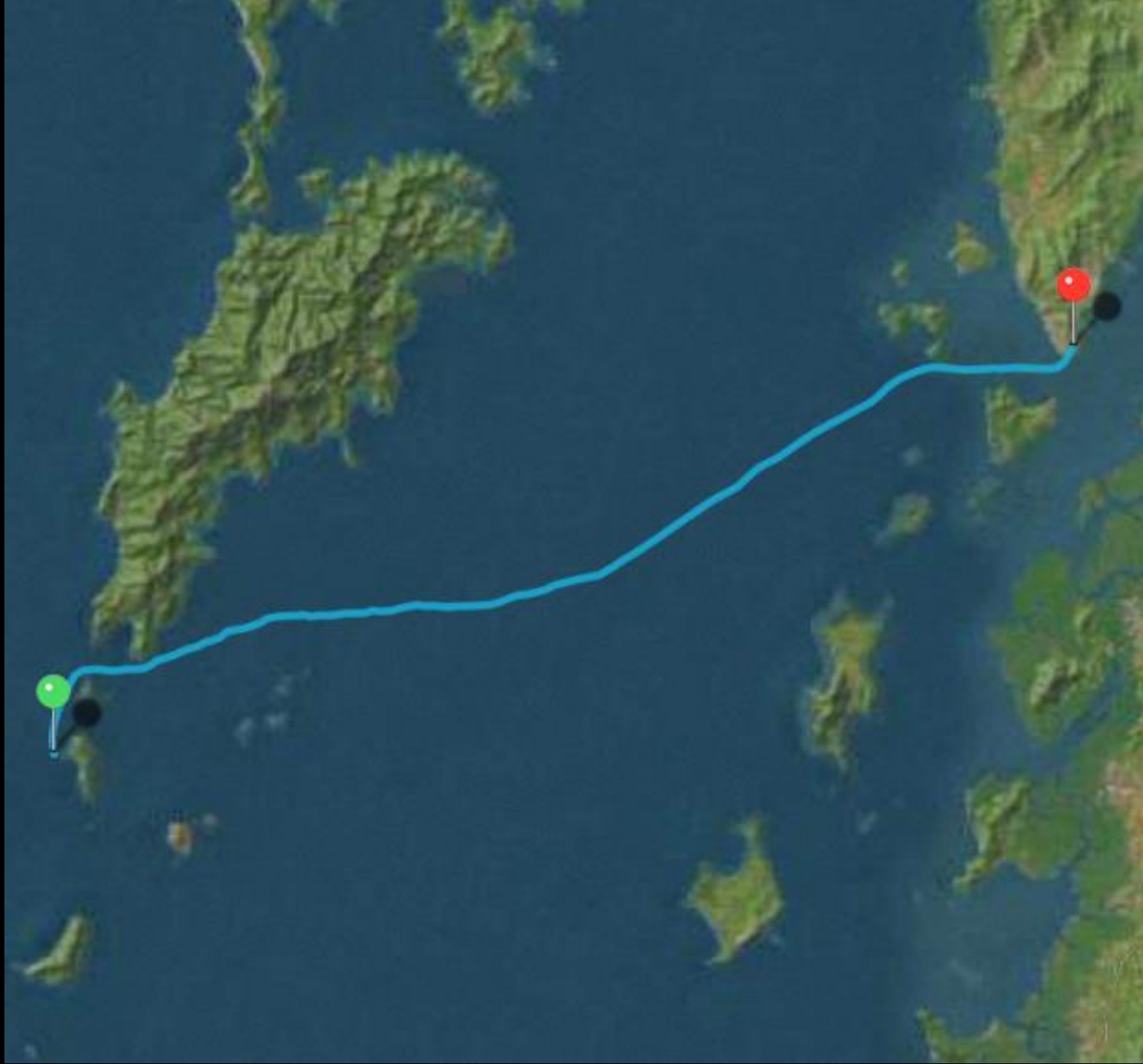
Than Kyun

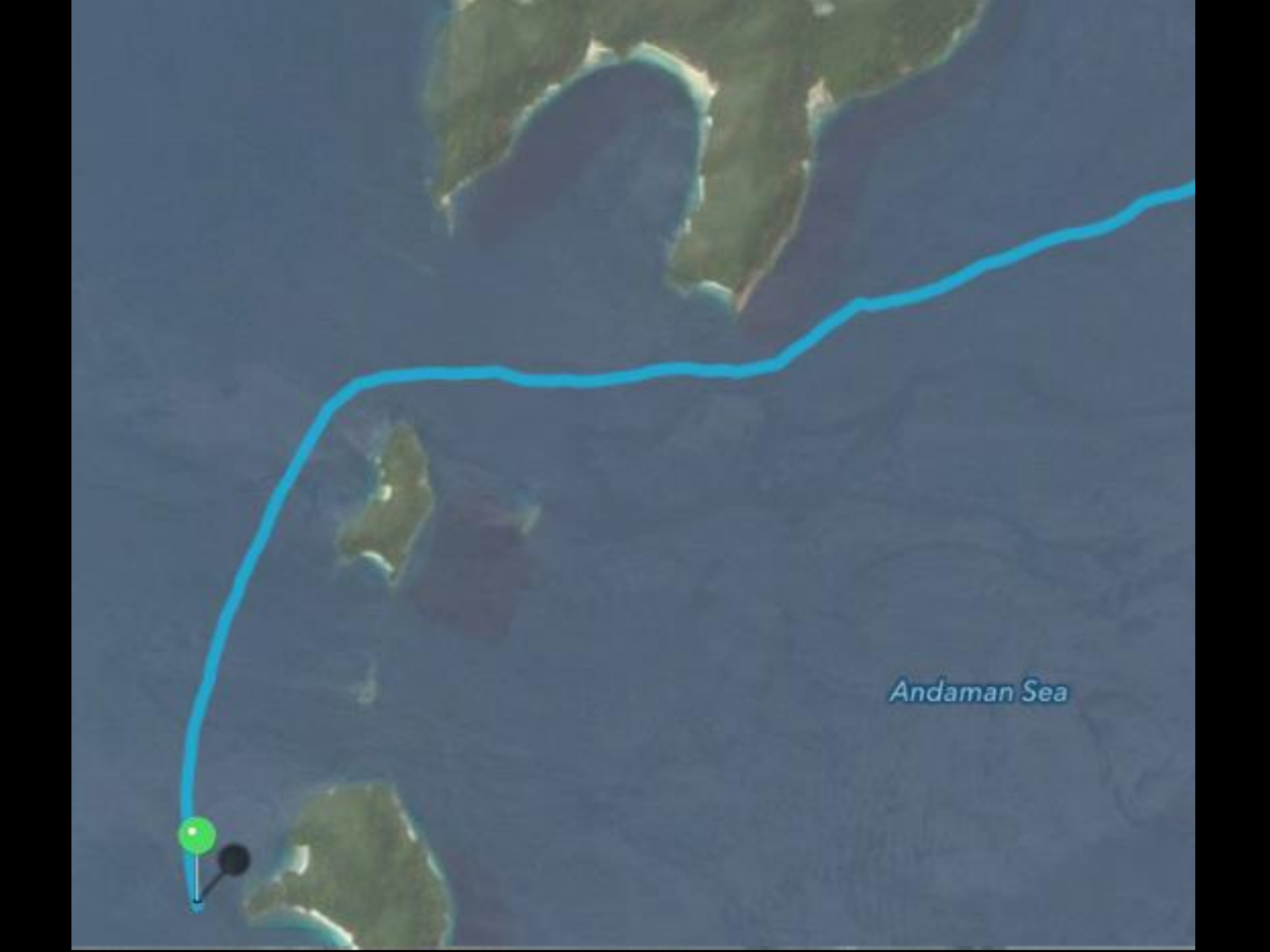


... so we went
here instead

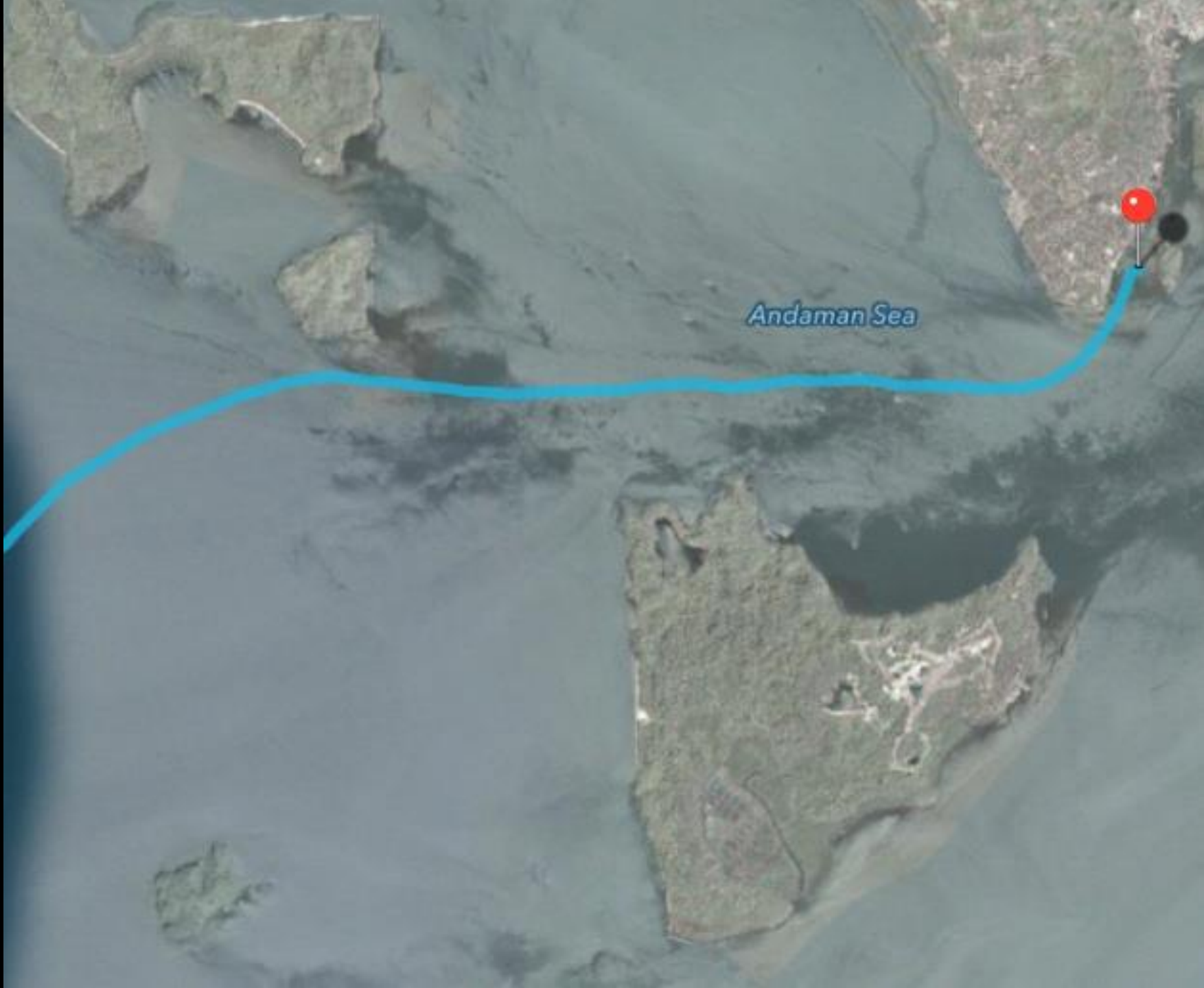








Andaman Sea



Andaman Sea

Arriving at Kawthaung



